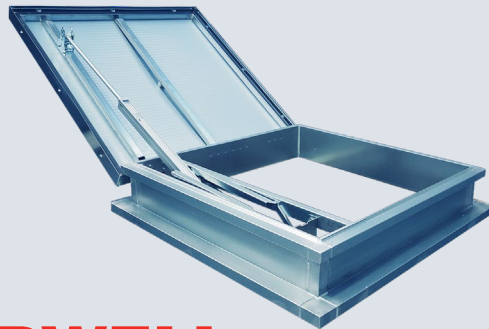


VENTEC OSTRO ACCESS 1m² GFA

KIT STAIRWELL



IDEAL FOR: STAIRWELLS, LOBBIES & CORRIDORS

24 HR NEXT DAY DESPATCH **400 SERIES COMPATIBLE** **24 VOLT**

Product Summary

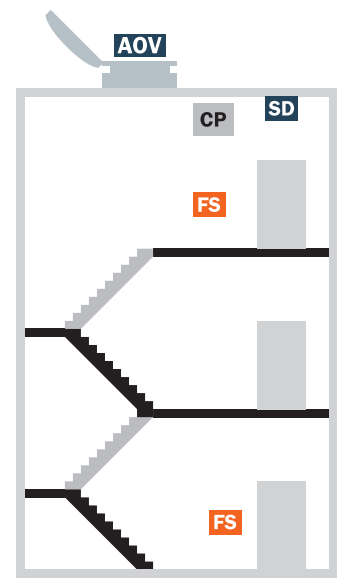
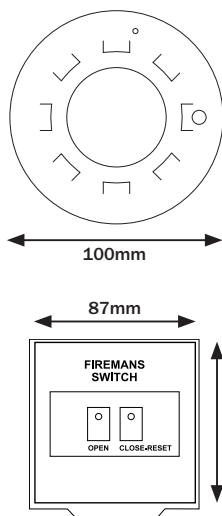
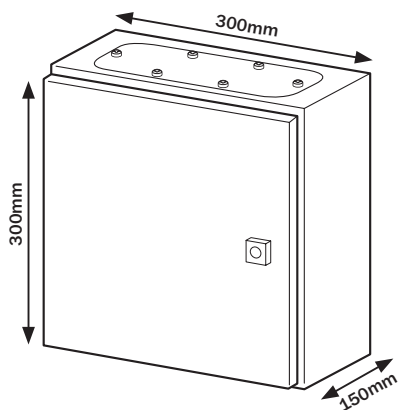
Complete AOV system for smoke dispersment and daily ventilation.

Kit Includes

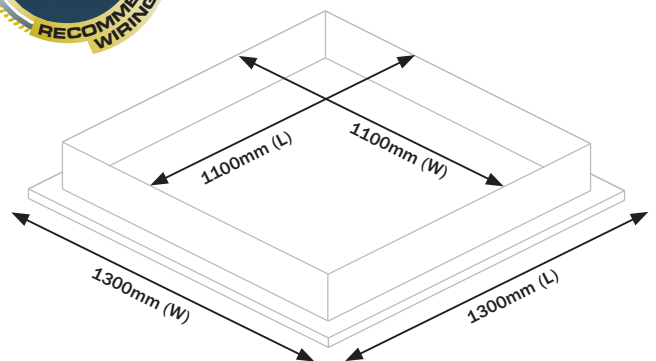
- **Ventec Ostro Access** Automatic smoke vent featuring; 1m² GFA, 140° opening, BS EN12101-2 certified, 10mm polycarbonate single leaf lid, Side-mounted 24Vdc actuator allows access, to and from the roof.
- **Ventec S404** 4 amps battery backup control panel featuring; two 12Vdc 4.5 Ah in series batteries. When power is unavailable they guarantee a 72 hour period in standby mode allowing the execution of a complete emergency opening command as prescribed by BS EN12101-10.
- **2x Ventec OFS 400** Fire Override Switch – direct control for firefighters. Open/Close/Reset commands.
- **Ventec SD 400** Optical Smoke Detector for fire detection and alarm systems.

Dimensions

Individual kit items not shown to scale.



EXAMPLE STAIRWELL SYSTEM



See individual product data sheets downloads for more information regarding installation and performance

VENTEC OSTRO ACCESS 1m² GFA KIT STAIRWELL

Technical Data

Ventec OSTRO ACCESS – 1m ² GEOMETRIC FREE AREA	
Geometric Free Area	1.06m ²
Aerodynamic Free Area	0.74m ²
Throat Opening Dimensions	1100mm (W) x 1100mm (L)
Flange Outer Dimensions	1300mm (W) x 1300mm (L)
Maximum Opening Angle	140°
Certification	BS EN12101-2
Voltage	24Vdc
Snow Load	SL 250
Wind Load	WL 1500
Operating Temperature Low	Resistance to -25°C – 0°C
Resistance Temperature High	B 300 resistance to 300°C
Operational Reliability	Re 50
Dual Purpose Reliability	Re 10000
Current Consumption	1.6 amps
Opening Time	< 60 seconds
Base Material	1.25mm galvanised steel
Base Insulation	20mm mineral wool cladding
Base Height (mm)	200mm
Flange Width (mm)	100mm
Flange Drip Cap	50mm
Lid Material	Cellular polycarbonate (opal) 10mm
Finishing	Steel strip surrounding the upper part of the base, used for fixing roofing paper
FP Core Type	FP PLUS
Number Of Cores	2 Core + Earth
UPSTAND REQUIREMENTS	
Structural Opening Dimensions	1100mm (W) x 1100mm (L)
External upstand size	1280mm (W) x 1280mm (L)
Upstand width	Maximum 90mm
Upstand height	Minimum 150mm

OFS 400 – FIRE OVERRIDE SWITCH	
FP Wiring Type	FP PLUS
Number Of Cores	7 Core + Earth

SD 400 – OPTICAL SMOKE DETECTOR	
Zones	1
Detection Principle	Photoelectric
Operating Temperature	-20°C to 60°C
FP Wiring Type	FP PLUS
Core Type	3 Core + Earth enhanced

VENTEC S404 BATTERY BACKUP CONTROL PANEL (4 amps)	
Battery Re-charging Time – 0% to 100%	10 hours
Operating Temperature	-5°C to 40°C
Visual Diagnostics – On Board LEDs	GREEN ON: Power supply is on YELLOW ON: A fault is detected RED ON: An alarm is active
Daily Ventilation Zones	1 or 2
Smoke Ventilation Zones	1
INPUTS	
Smoke Detectors Supported	10
Fire Override Switches Supported	1 minimum – 10 maximum
Fire Override Switch Input Core Type	7 Core + Earth
Fire Alarm Volt Free Normally Closed Connection	✓
Master Fire Override Switch (All zones open or closed)	✓
Daily Switch	1 or 2
Thermostat, Wind, Rain and CO ₂ Sensor	✓
Maglock Support – Auxiliary 1 Output	✓
OUTPUTS	
2 Motor Outputs 24Vdc	Max. load 2x 2.0 amps
Visual Display	Min. 1 Fire Override Switch
Expandable Auxiliary Panel	✓
Lift To Ground Option	✓
FP Wiring Type	FP PLUS

Maintenance

It is important to maintain these products as per the manufacturers instructions. If you require assistance with any aspect of installation, commissioning or maintenance please contact our customer support team today.

Related Products and Services

The following should also be considered when planning your system.



INSTALLATION
& MAINTENANCE



400 SERIES
BATTERY BACKUP



PROJECT
COMMISSIONING



400 SERIES
WEATHER STATION